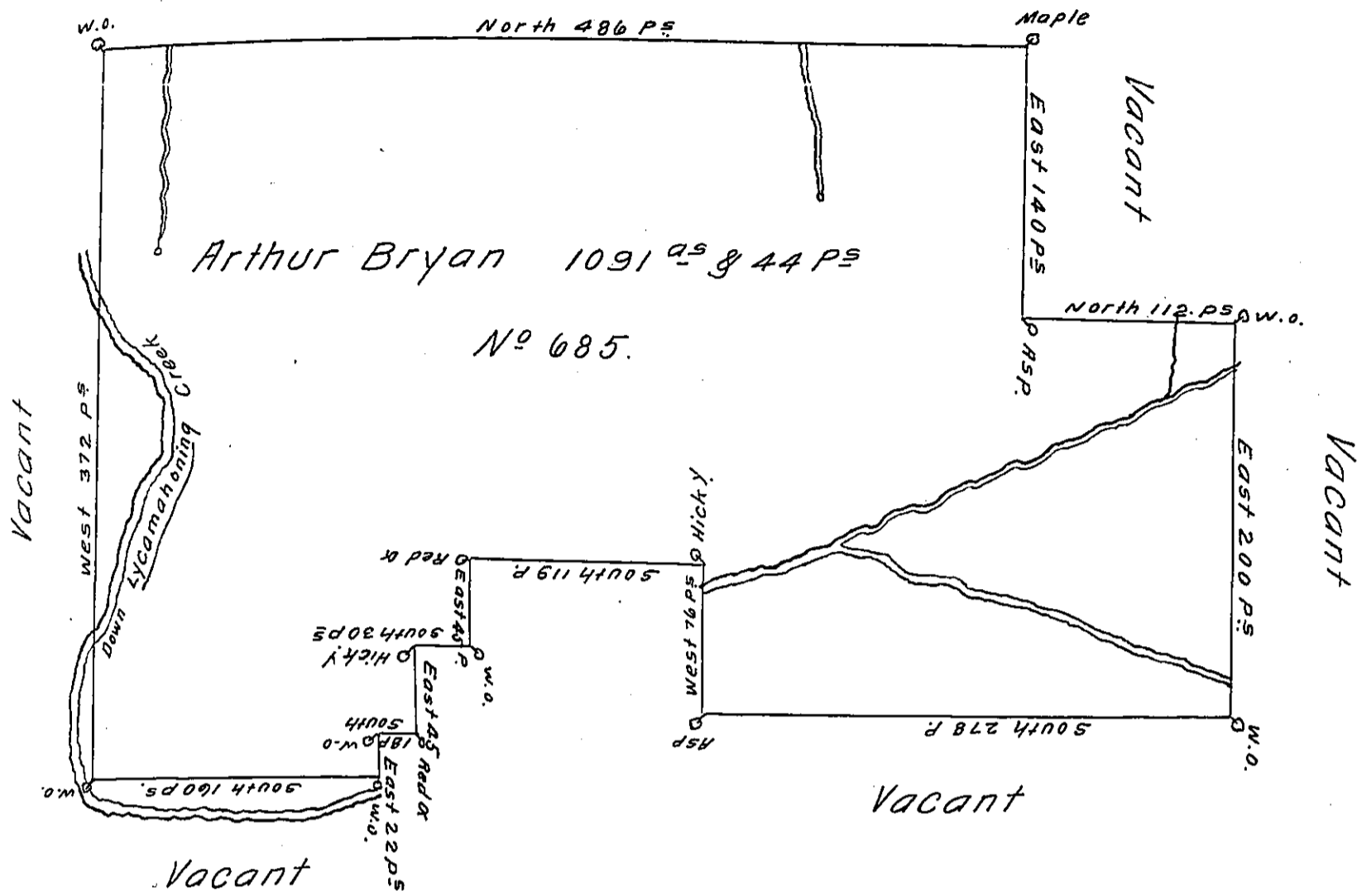


McCleans Eastern Boundary of District



A Draught of a Tract of Land Situate on Lycamahoning Creek in the County of Northumberland within the last Purchase Made of the Indians. Containing One thousand and Ninety one Acres and forty four Perches with the usual Allowance of six Per Cent for Roads &c^o Surveyed for Arthur Bryan the 20th Day of October 1786. In Pursuance of a Warrant Dated October 20th 1785. N^o 685.

George Woods Jun^r D. S.

To John Lukens Esq^r S. G.

IN TESTIMONY that the above is a copy of the original remaining on file in the Department of Internal Affairs of Pennsylvania, made conformably to an Act of Assembly approved the 16th day of February, 1833, I have hereunto set my Hand and caused the Seal of said Department to be affixed at Harrisburg, this thirteenth day of December 1910.

Henry Fowler
Secretary of Internal Affairs.